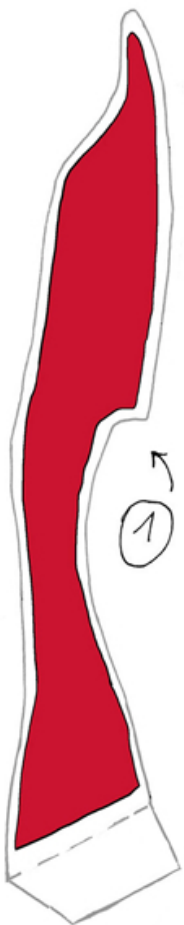


Alice's ice cream shop



CUT
FOLD
GLUE



THE ICE CREAM SHOP OF COLOROPOLI MAKES ICE CREAM THAT IS MARVELOUS!

ITS SPECIALTIES ARE:

- RED CHOCOLATE
- VERMILION PISTACHIO
- BURGUNDY CREAM
- CRIMSON CHOCOLATE CREAM
- CARLET PINEAPPLE

(IT'S ALSO FAMOUS FOR ITS CREAMY BLUE CHERRY CREAM, BUT IT SELLS OUT QUICK)

CUT PIECES ① AND ② AND PUT THEM TOGETHER, GLUING UNTIL THE FOLD.



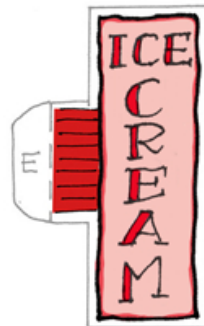
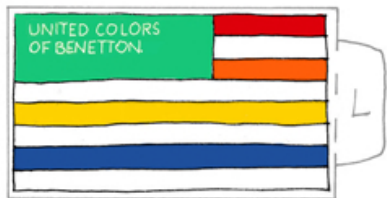
A PROJECT BY

UNITED COLORS OF BENETTON.

IN COLLABORATION WITH

MUBA
MUSEO DEI BAMBINI MILANO

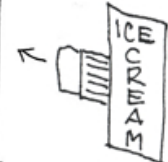
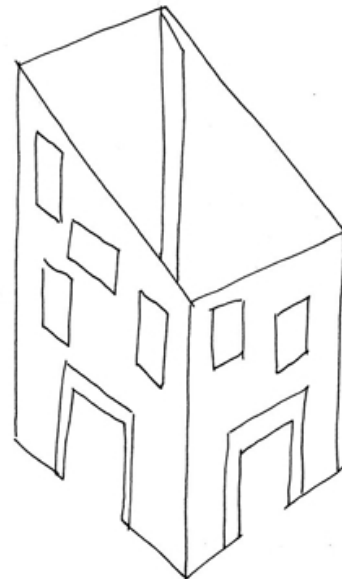
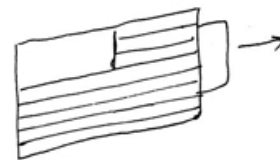
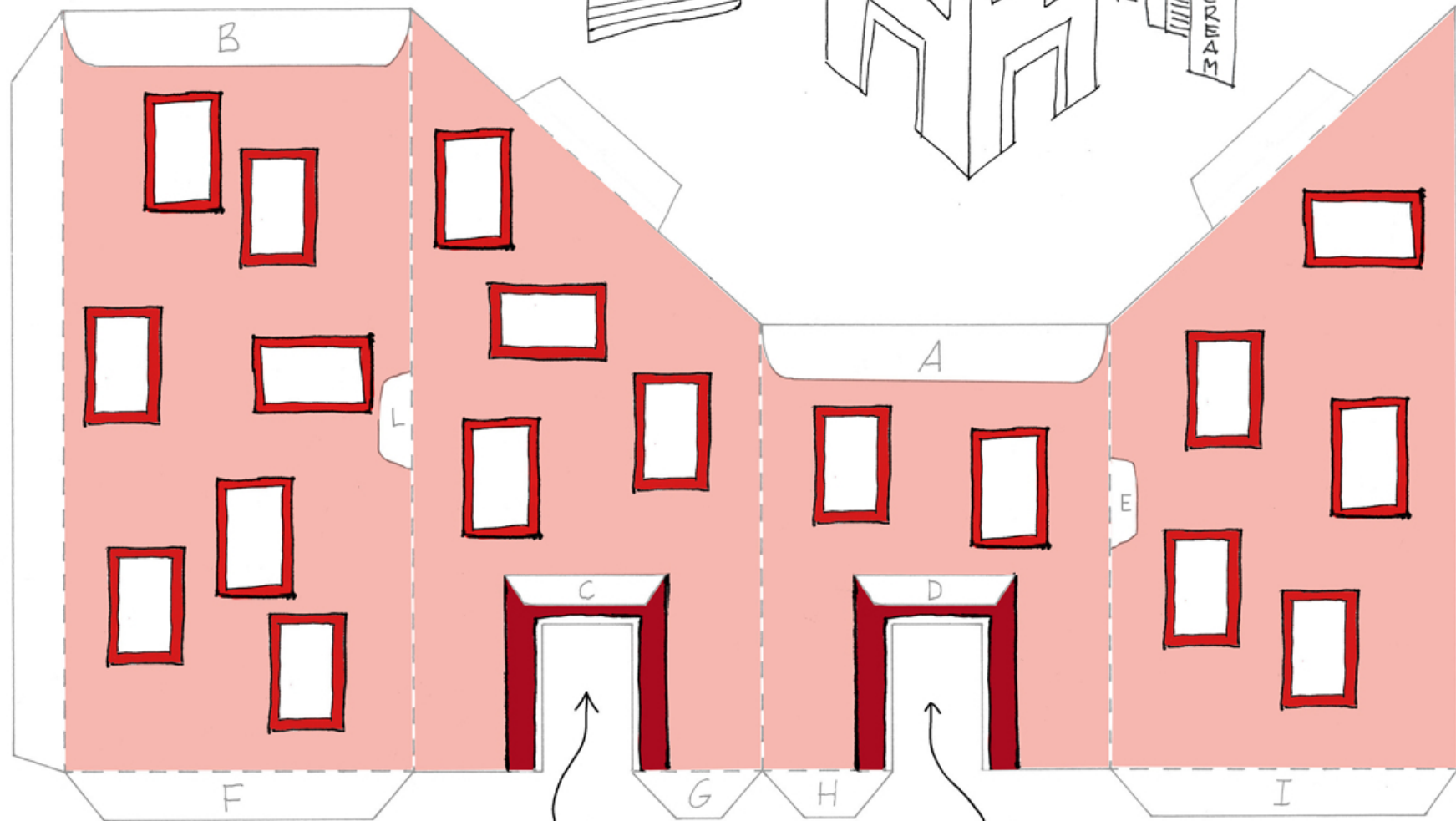
BY
ISADORA BUCCIARELLI



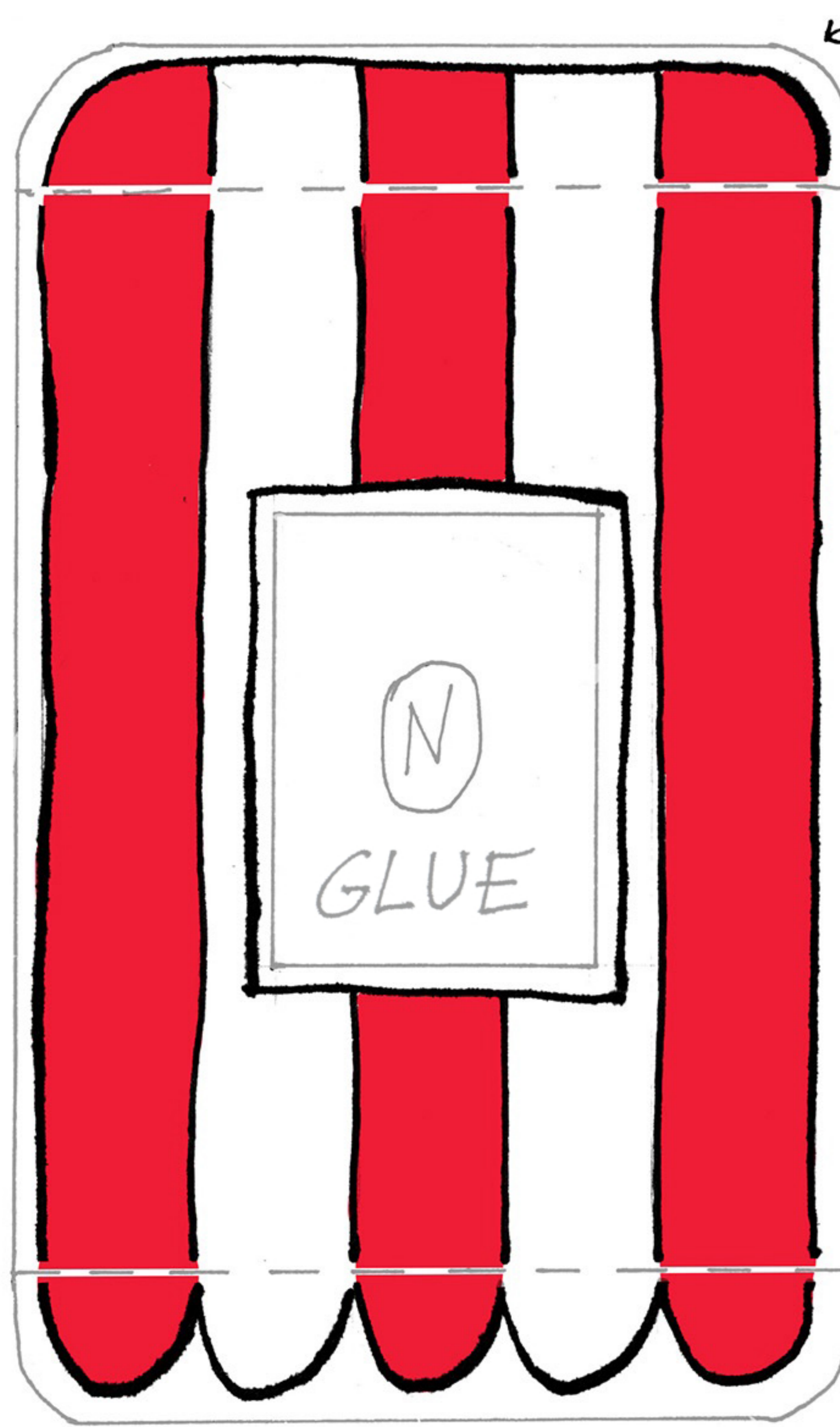
GLUE ALL PIECES
AND FOLD OVER
THE INNER
FLAPS
(F)(G)(H)(I)



CUT OUT
THE ICE CREAM
SHOP AND ITS
TWO SIGNS

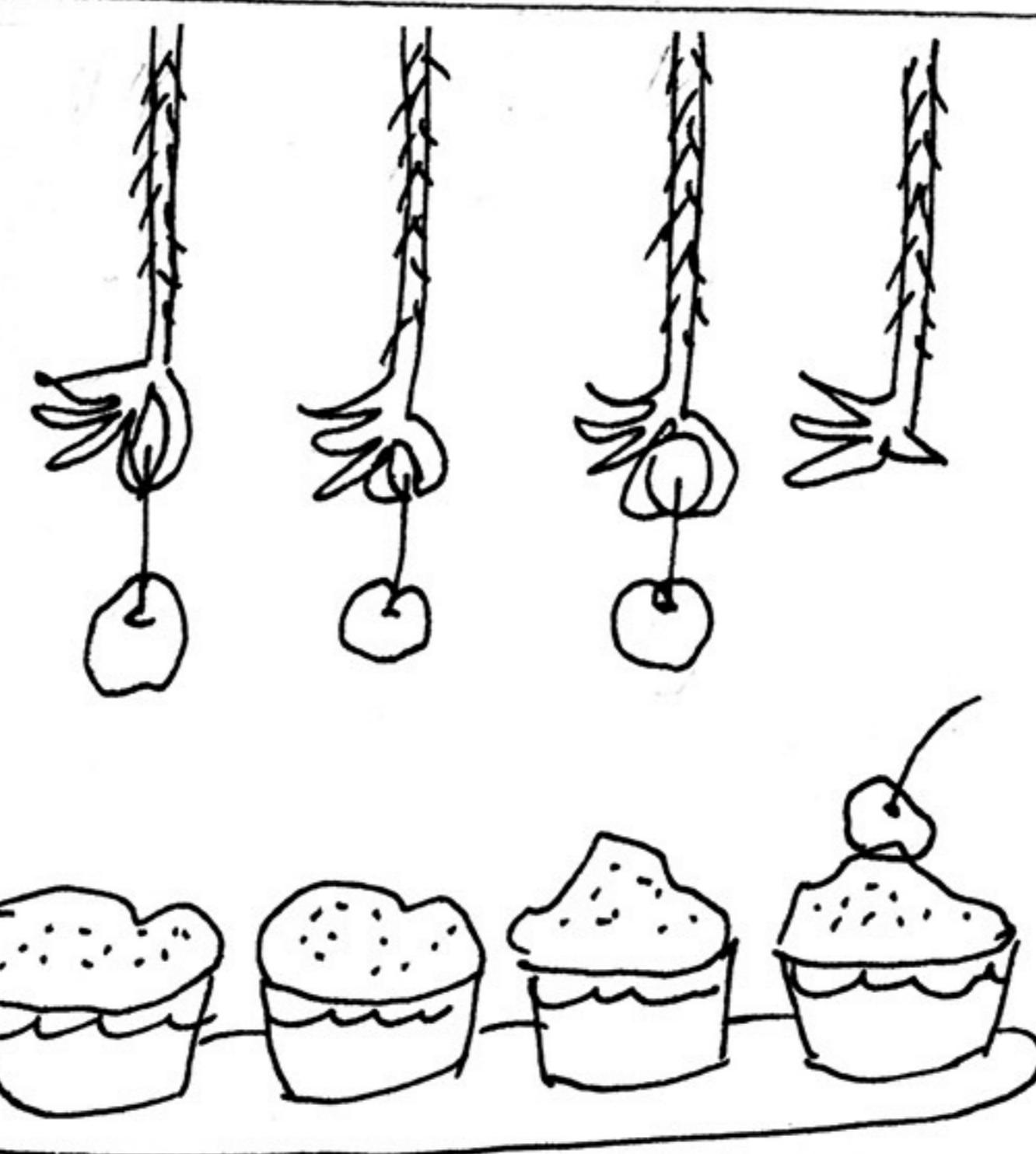
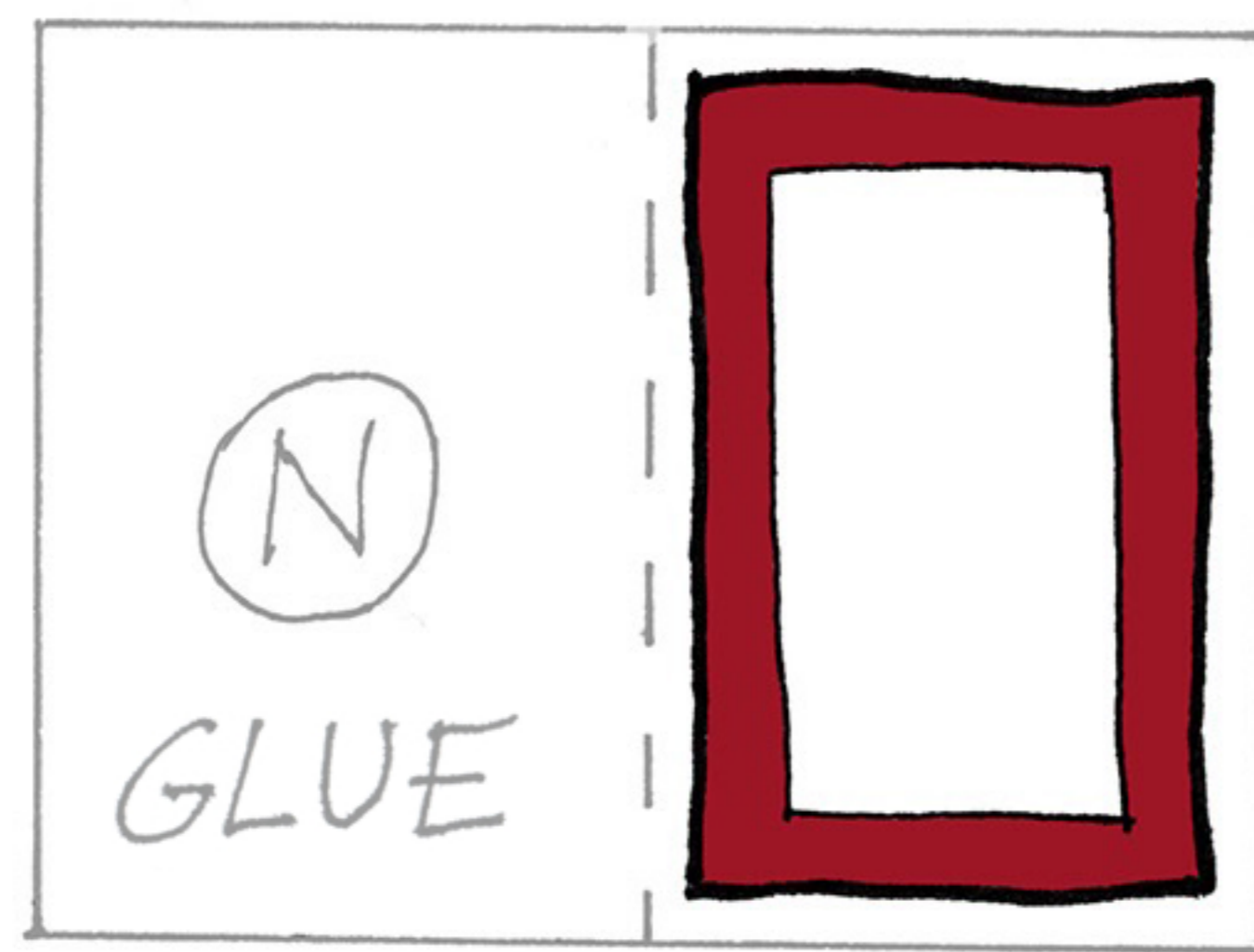


CUT OUT THE DOORS AS WELL

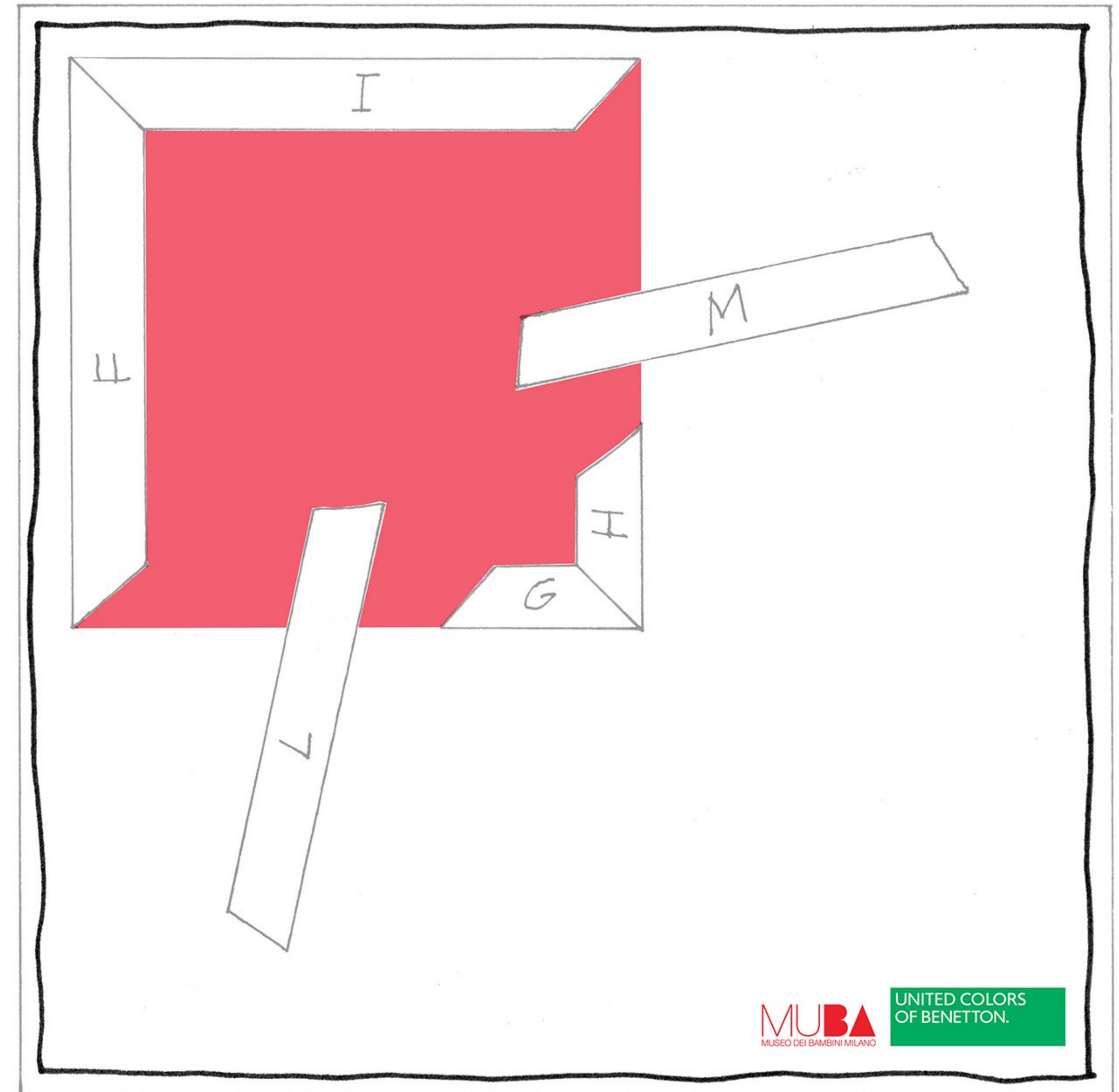
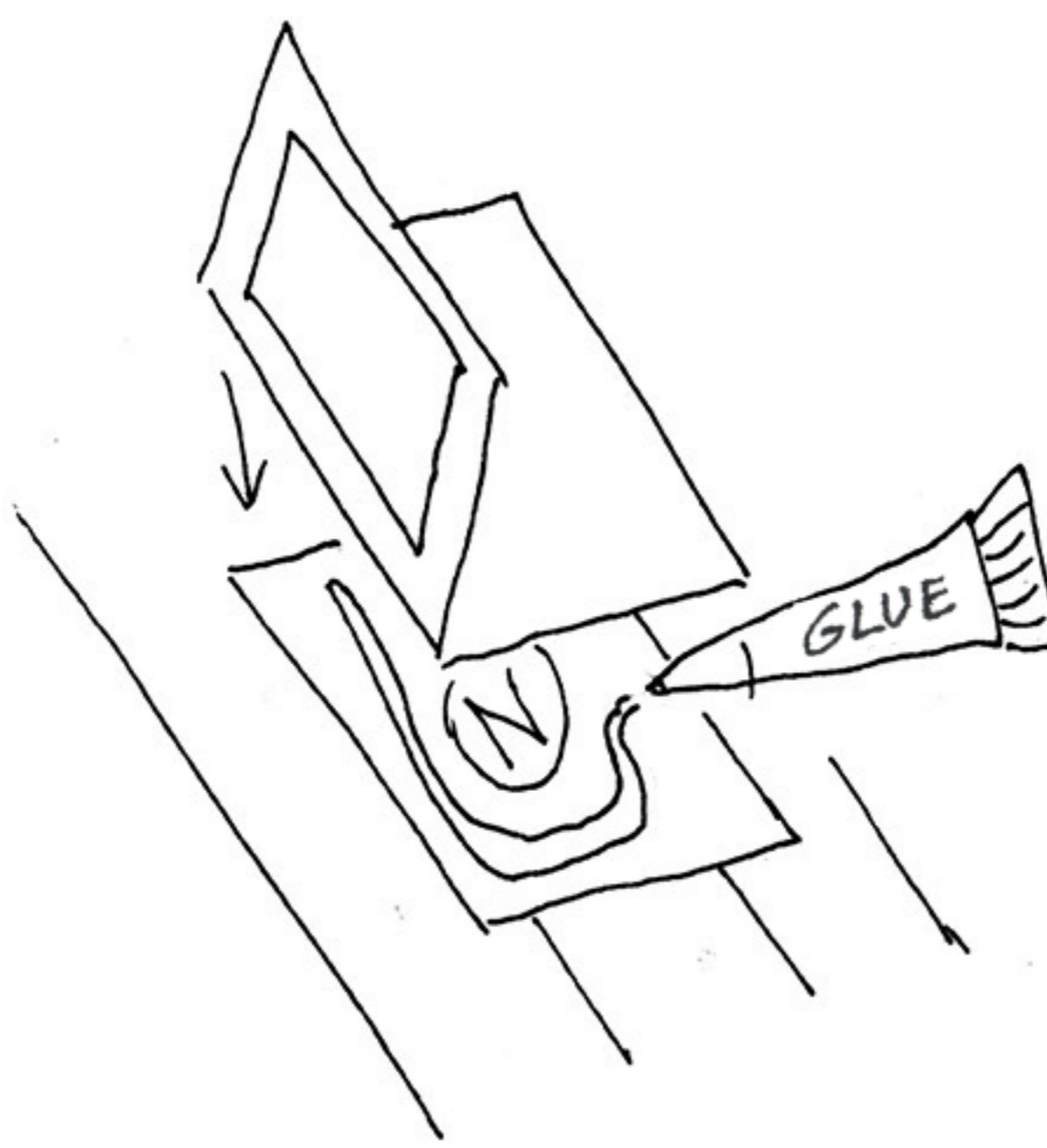


(B)

WINDOW ↘

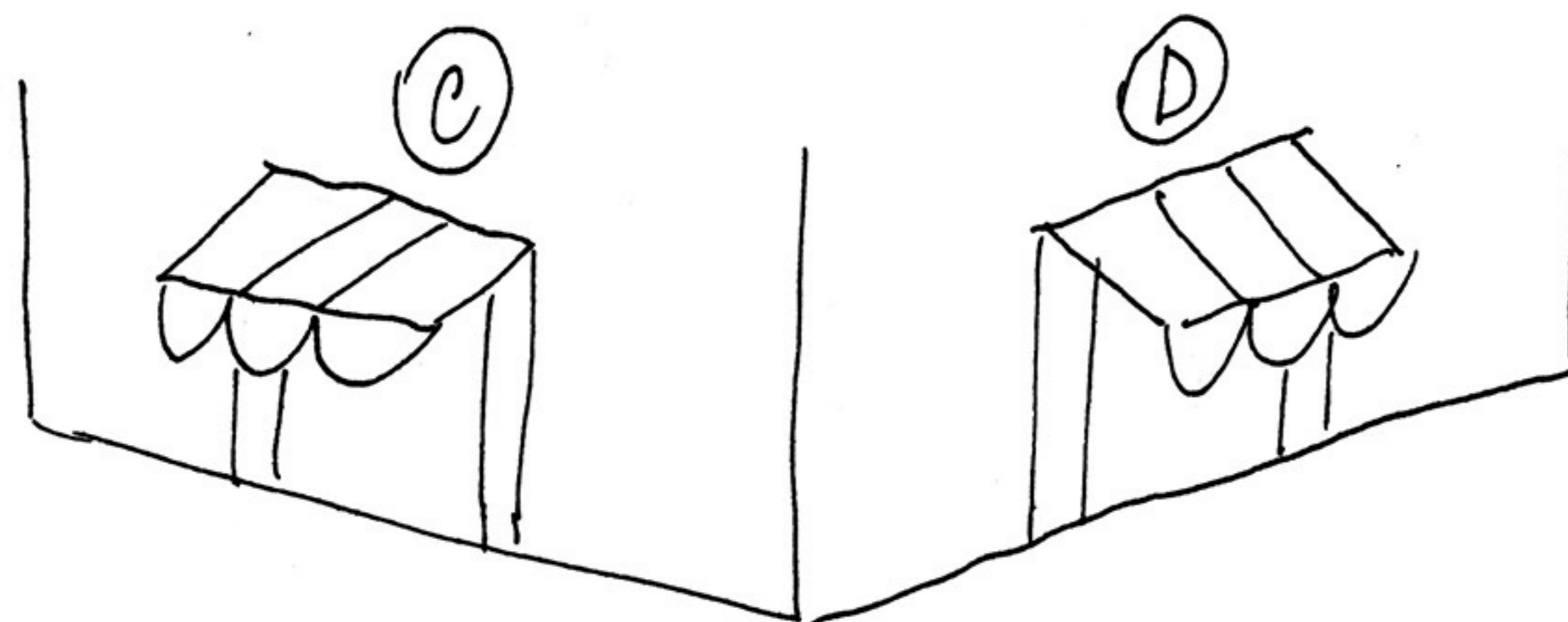
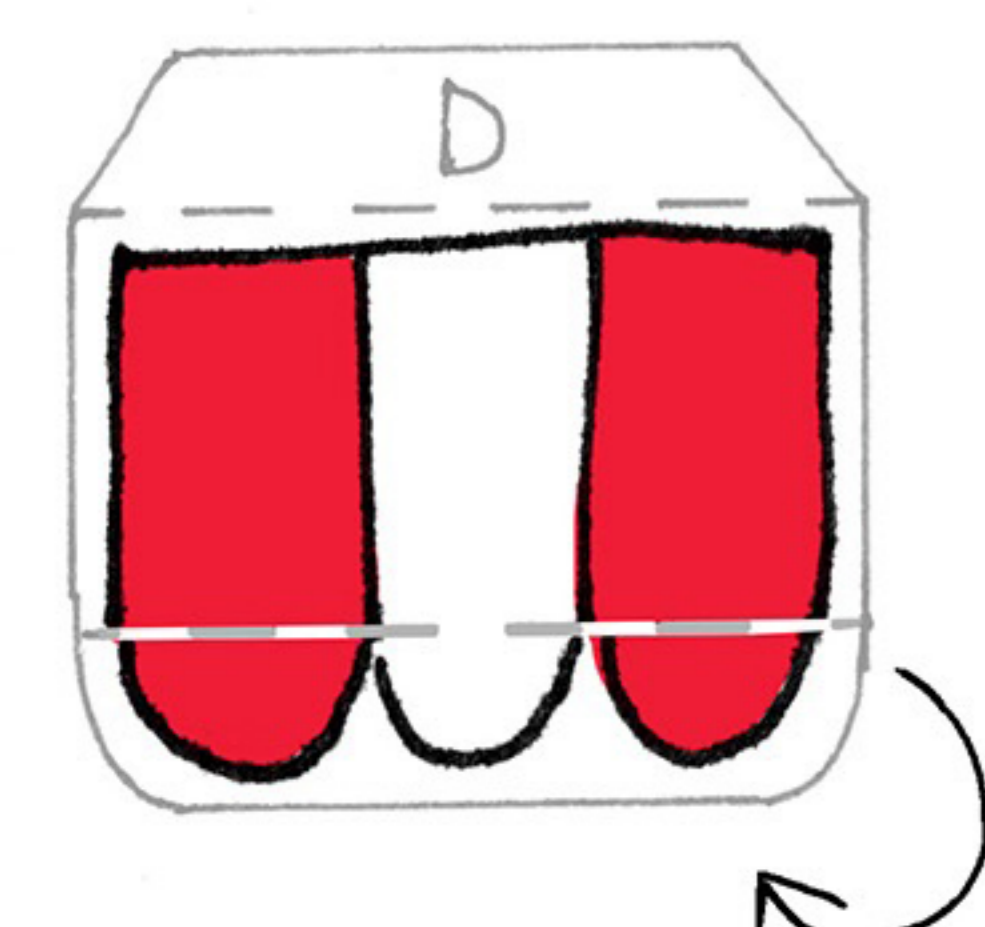
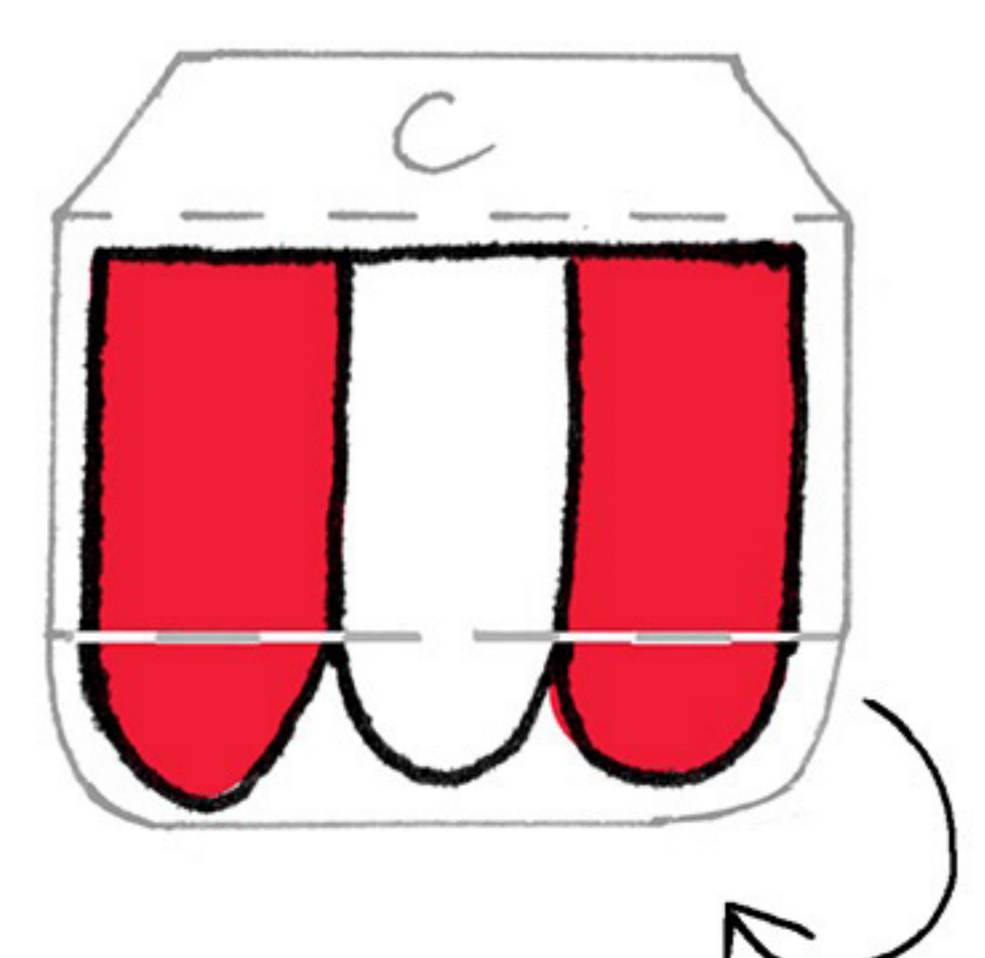
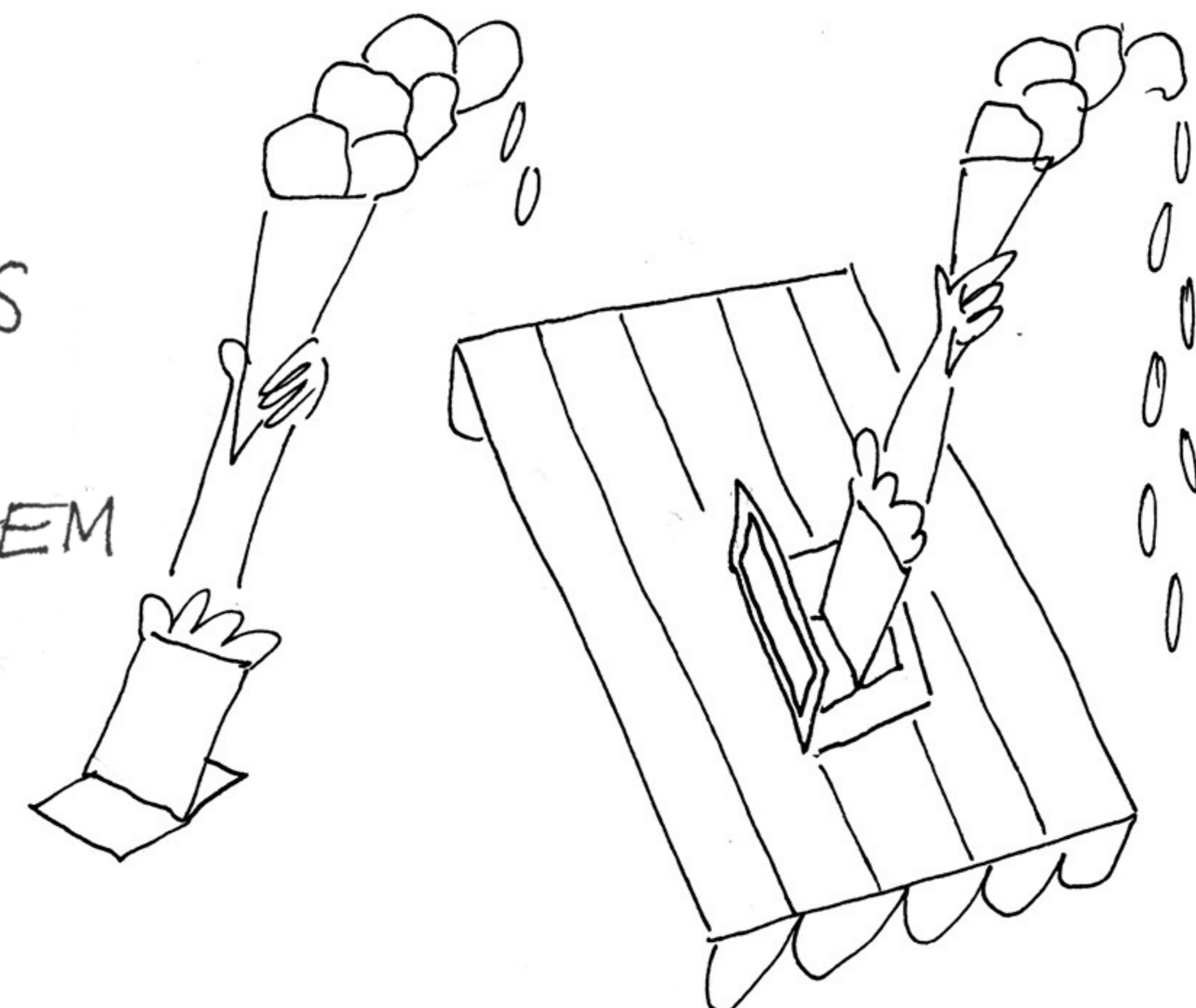


GLUE THE WINDOW ON THE ROOF (ONLY THE PART WITH THE (N)!) →



MUBA MUSEO DEI BAMBINI MILANO UNITED COLORS OF BENETTON.

FOLD THE FLAPS OF THE ARM AND GLUE THEM INSIDE THE WINDOW



LASTLY, GLUE THE LEGS OF THE GIANT ICE CREAM MAKER AT ITS BASE!

